



The Barrington



The Barrington

Model number: 230BA40644B

4 beds • 3 baths • 2560 sq.ft. • 40' width • 64' depth

Our home building facilities invest in continuous product and process improvements. Plans, dimensions, features, materials, specifications and availability are subject to change without notice or obligation. Renderings and floor plans are representative likenesses of our homes and may differ from the actual homes. We invite you to tour a Home Center near you and inspect the highest value in quality housing available or call (801) 773-8601 to speak with a Home Consultant. Copyright 2017, CMH. All rights reserved.

<https://www.claytonoflayton.com>

CLAYTON HOMES-LAYTON

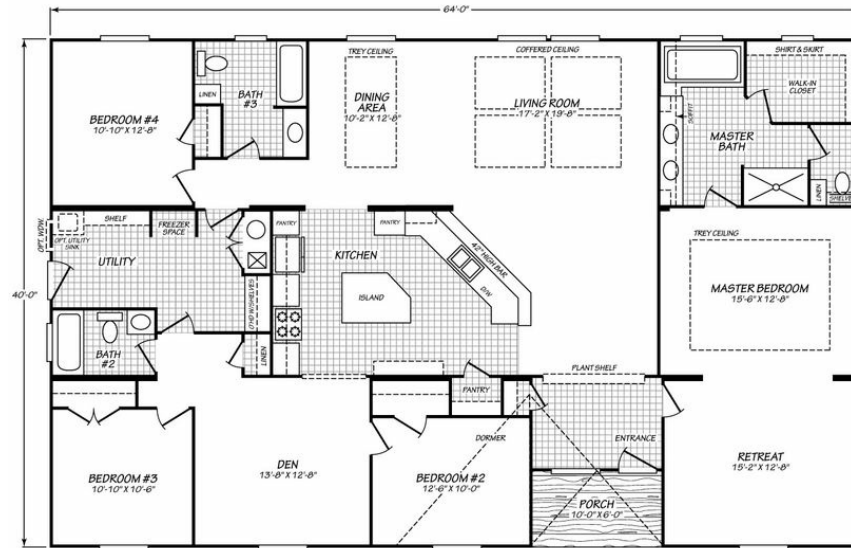
1650 N MAIN ST
LAYTON, UT 84041

Monday - Thursday: 9am to 5pm
Friday: 9am to 5pm
Saturday: 9am to 5pm
Sunday: Closed

(801) 773-8601



The Barrington



©2018 FLEETWOOD HOMES INC.
ALL RIGHTS RESERVED

The Barrington Model number: 230BA40644B

4 beds • 3 baths • 2560 sq.ft. • 40' width • 64' depth

Our home building facilities invest in continuous product and process improvements. Plans, dimensions, features, materials, specifications and availability are subject to change without notice or obligation. Renderings and floor plans are representative likenesses of our homes and may differ from the actual homes. We invite you to tour a Home Center near you and inspect the highest value in quality housing available or call (801) 773-8601 to speak with a Home Consultant. Copyright 2017, CMH. All rights reserved.

<https://www.claytonoflayton.com>

CLAYTON HOMES-LAYTON

1650 N MAIN ST
LAYTON, UT 84041

Monday - Thursday: 9am to 5pm
Friday: 9am to 5pm
Saturday: 9am to 5pm
Sunday: Closed

(801) 773-8601