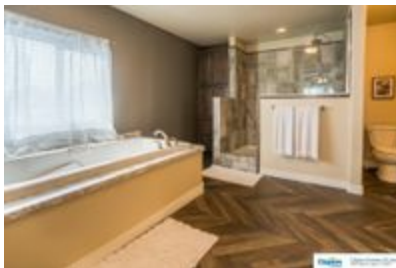




The Missouri *SELLING MODEL*



The Missouri *SELLING MODEL*

Model number: 55IMP30744AH18

4 beds • 2 baths • 2220 sq.ft. • 30' width • 74' depth

Our home building facilities invest in continuous product and process improvements. Plans, dimensions, features, materials, specifications and availability are subject to change without notice or obligation. Renderings and floor plans are representative likenesses of our homes and may differ from the actual homes. We invite you to tour a Home Center near you and inspect the highest value in quality housing available or call (801) 773-8601 to speak with a Home Consultant. Copyright 2017, CMH. All rights reserved.

<https://www.claytonoflayton.com>

CLAYTON HOMES-LAYTON

1650 N MAIN ST
LAYTON, UT 84041

Monday - Thursday: By Appt. Only
Friday: By Appt. Only
Saturday: By Appt. Only
Sunday: Closed

(801) 773-8601



The Missouri *SELLING MODEL*

Clayton Homes of Layton
1550 N Main St, Layton, UT 84041

"THE MISSOURI" 3074-R
30'-0" x 74'-0"
APPROX. 2,220 SQ. FT.



The Missouri *SELLING MODEL*

Model number: 55IMP30744AH18

4 beds • 2 baths • 2220 sq.ft. • 30' width • 74' depth

Our home building facilities invest in continuous product and process improvements. Plans, dimensions, features, materials, specifications and availability are subject to change without notice or obligation. Renderings and floor plans are representative likenesses of our homes and may differ from the actual homes. We invite you to tour a Home Center near you and inspect the highest value in quality housing available or call (801) 773-8601 to speak with a Home Consultant. Copyright 2017, CMH. All rights reserved.

<https://www.claytonoflayton.com>

CLAYTON HOMES-LAYTON

1650 N MAIN ST
LAYTON, UT 84041

Monday - Thursday: By Appt. Only
Friday: By Appt. Only
Saturday: By Appt. Only
Sunday: Closed

(801) 773-8601